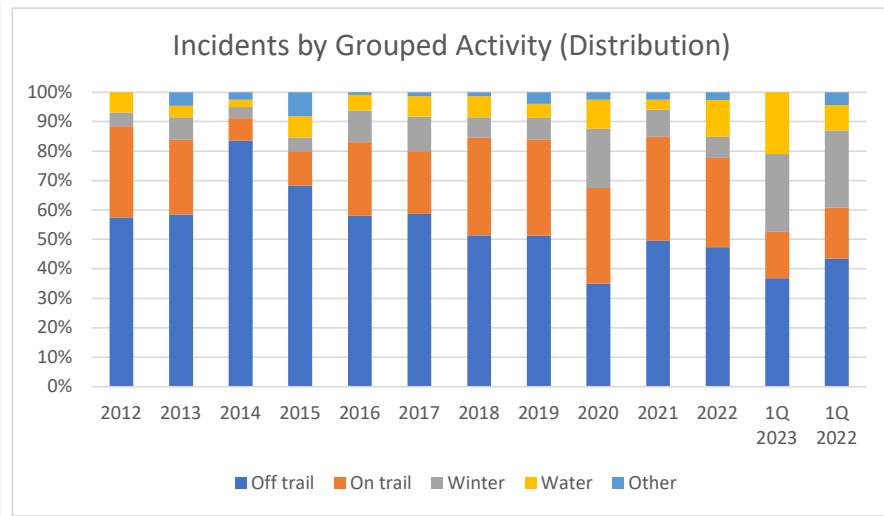
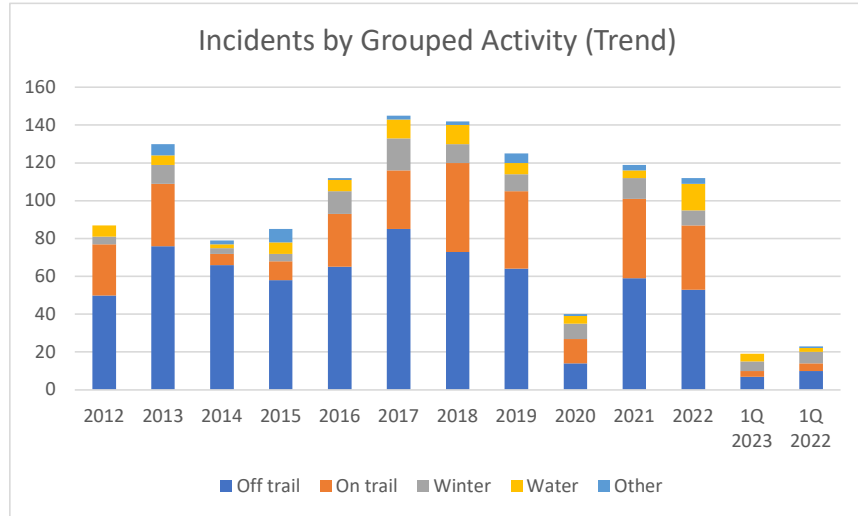


Incidents by Activity Group

Through Mar 2023

Incidents by Activity Group	2012	2013	2014	2015	2016	2017	2018	2019	2020	2021	2022	1Q 2023	1Q 2022
Off trail	50	76	66	58	65	85	73	64	14	59	53	7	10
On trail	27	33	6	10	28	31	47	41	13	42	34	3	4
Winter	4	10	3	4	12	17	10	9	8	11	8	5	6
Water	6	5	2	6	6	10	10	6	4	4	14	4	2
Other	0	6	2	7	1	2	2	5	1	3	3	0	1
Total	87	130	79	85	112	145	142	125	40	119	112	19	23
Off trail %	57%	58%	84%	68%	58%	59%	51%	51%	35%	50%	47%	37%	43%
On trail %	31%	25%	8%	12%	25%	21%	33%	33%	33%	35%	30%	16%	17%
Winter %	5%	8%	4%	5%	11%	12%	7%	7%	20%	9%	7%	26%	26%
Water %	7%	4%	3%	7%	5%	7%	7%	5%	10%	3%	13%	21%	9%



CMS Incidents by Activity Group

Through Mar 2023

	2012	2013	2014	2015	2016	2017	2018	2019	2020	2021	2022	1Q 2023	1Q 2022
Off trail	13	17	20	17	15	15	12	10	2	12	9	1	2
On trail	5	4	1	1	3	0	5	3	0	4	7	0	3
Winter	2	2	1	1	1	1	1	4	3	3	2	1	2
Water	0	2	1	0	1	2	3	0	0	1	1	0	0
Other	0	3	2	4	0	1	2	2	0	0	2	0	1
Total	20	28	25	23	20	19	23	19	5	20	21	2	8
					7								
Off trail %	65%	61%	80%	74%	75%	79%	52%	53%	40%	60%	43%	50%	25%
On trail %	25%	14%	4%	4%	15%	0%	22%	16%	0%	20%	33%	0%	38%
Winter %	10%	7%	4%	4%	5%	5%	4%	21%	60%	15%	10%	50%	25%
Water %	0%	7%	4%	0%	5%	11%	13%	0%	0%	5%	5%	0%	0%

